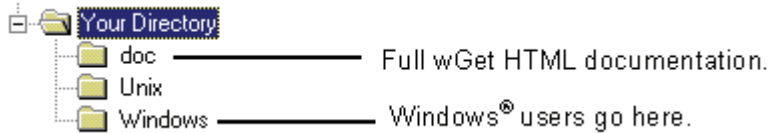


wGet step by step for Windows® users

Download the wGet 1.5.3 Eurex sample bundle and unzip it into a working directory. After unzipping the file, your directory should look like this:



In the Windows directory you will find the following files:

go.bat Sample bat file which you'll have to edit to fill in your personal data. readme.txt Instructions on how to edit the "go.bat" file. wget.exe The binary file for Windows NT

The personal data you need to set up the "go.bat" file is:

- Your file service account name and password.
- Remember which service you have ordered: 'Market Statistics' and/or 'Theoretical Price Data' and/or 'Current Traded Series Change Version'
- Check if you are using a proxy to access the Internet. If so, you'll need the proxy URL (or IP) and the port number.

Note: "go.bat" is a sample file written by Eurex. Its only purpose is to call wGet with the proper parameter (and there are many of them). No guarantee is taken. For more information on how to use wGet type `wget --help` or read the documentation.

Open the "go.bat" file with any editor. After some initial code you'll see the first block - SELECT FILE SERVICE SOURCE - where you have to activate the HTML target page by removing the 'REM #' prefix at the beginning of each line. The following example has only the "Theoretical Price Data" page activated:

```

REM ***** - SELECT FILE SERVICE SOURCE - *****
REM * Select from:
REM * Market Statistics URL:
REM * http://www.eurexchange.com/market/statistics/market_statistics/offline.html
REM * AND/OR
REM * Snapshot Summary Reports URL:
REM * http://www.eurexchange.com/market/statistics/daily/snapshot_summary.html
REM * AND/OR
REM * Current Traded Series URL:
REM * http://www.eurexchange.com/market/statistics/daily/current_traded_series.html
REM * AND/OR
REM * Current Traded Series Delta Version URL:
REM * http://www.eurexchange.com/market/statistics/daily/current_traded_series_delta.html
REM * AND/OR
REM * Eurex Theoretical Price Data for Eurex Products URL:
REM * http://www.eurexchange.com/clearing/risk/theoreticals/price.html
REM * AND/OR
REM * Eurex Theoretical Price Data for Flexible Options URL:
REM * http://www.eurexchange.com/clearing/risk/theoreticals/price_flexible.html
REM * AND/OR
REM * Theoretical Price Data for USD-denominated Products URL:
REM * http://www.eurexchange.com/clearing/risk/theoreticals/usd_denominated.html
REM * AND/OR
REM * Theoretical Price Data for Equities URL:
REM * http://www.eurexchange.com/clearing/risk/theoreticals/equities.html
REM * AND/OR
REM * Theoretical Price Data for Unconditional Subscription Rights URL:
REM * http://www.eurexchange.com/clearing/risk/theoreticals/unconditional_subscription.html
REM * AND/OR
REM * Theoretical Price Data for Bonds URL:
REM * http://www.eurexchange.com/clearing/risk/theoreticals/securities.html
REM * AND/OR
REM * Bond Coupon Parameters URL:
REM * http://www.eurexchange.com/clearing/risk/theoreticals/bond_coupon.html
REM * AND/OR
REM * Derivatives Margin Groups and Classess URL:
REM * http://www.eurexchange.com/market/clearing/parameters/derivatives_margingroup.html
REM * AND/OR
REM * Securities Margin Groups and Classes URL:
REM * http://www.eurexchange.com/market/clearing/parameters/securities_margingroup.html
REM * AND/OR
REM * Haircut and Adjusted Exchange Rate URL:
REM * http://www.eurexchange.com/market/clearing/parameters/haircut_exchange.html
REM *****
REM # set PAGE= %PAGE% (Type URL here)

```

In the next block you'll have to set your account name and password.

The example below shows the user with account name OLSEN and the password BOMBOM

```

REM ***** - ENTER FILE SERVICE ACCOUNT DATA - *****
REM * If you have registered for the FILE SERVICE you have been supplied with an
REM * account and password. These values are REQUIRED for kbdownload.html
REM * (Market Statistics) and for tpdownload.html (Theoretical Price Data)
REM *****
setACCOUNT=--http-user=OLSEN --http-passwd=BOMBOM

```

If you have NO proxy, you are already done. Otherwise fill in the next block asking for the proxy parameters. The example below sets the proxy address to 111.234.112.044 and the port number to 9999

```

REM ***** - L O C A L PROXY SETTINGS I - *****
REM * Some organisations have to access the Internet through a proxy.
REM * If so, set your proxy parameters next.
REM *****
set PROXY=111.234.112.044:9999

```

The last setting is for the special situation where your employer does, not allow file downloading. The proxy administrator of your firm can supply you with a special proxy IP. Usually, a proxy ID and password are required to pass the proxy (and let you download files from the Internet). In the example below, the proxy ID is BOB and the password is FILEGET

```

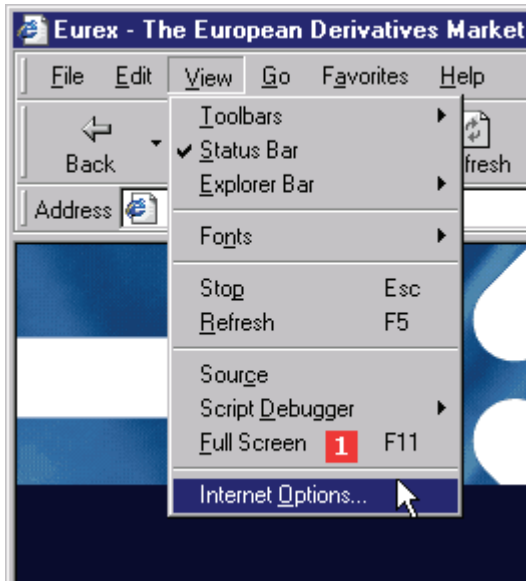
REM ***** - L O C A L PROXY SETTINGS II - *****
REM * Some proxies require a user and password entry to access the Internet
or REM * to download a file. If you have no file download restrictions
you REM * may skip this
part. REM * Otherwise fill in you user and password data to enable a
file REM * download. (Ask your net
administrator). REM
*****
setPROXY_PW=--proxy-user=BOB --proxy-passwd=FILEGET

```

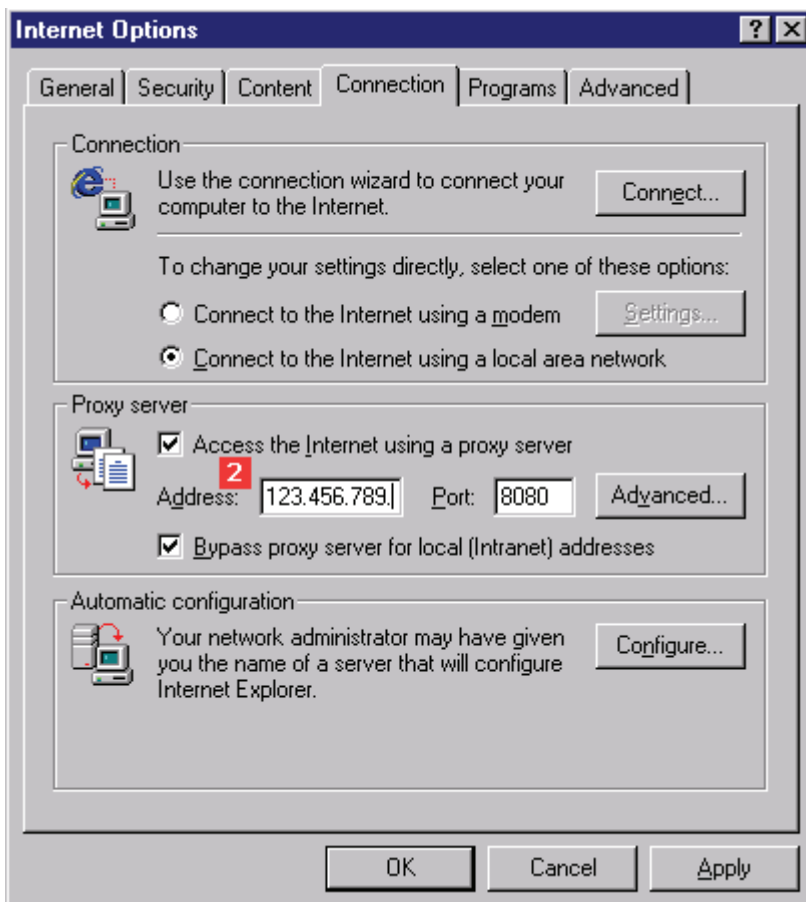
Find the Proxy Address (IP)

The best way to find out if you are using a proxy and to get the proxy address is by opening your browsers configuration. The next two images are screenshots of Internet Explorer 4.0, showing where to look for the proxy address (IP) and port number. If it's empty, you are not using a proxy.

Select in the following order: 1, 2

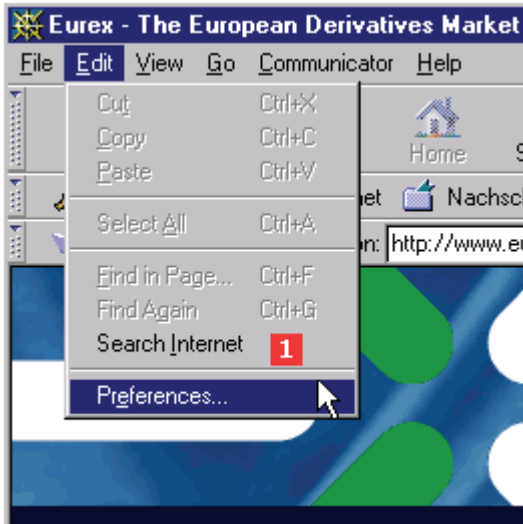


The Address (IP) is longer than the one you see in this example. The last block of numbers is "hidden" at the end. An IP address contains 4 BLOCKS of up to 3 numbers. E.g. 123.145.89.12.

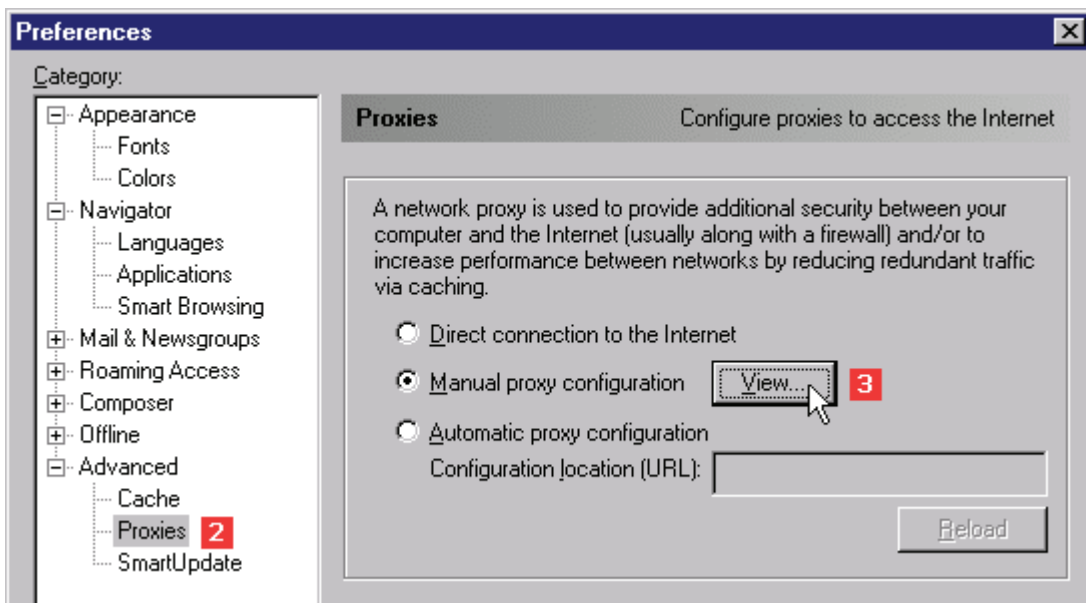


The following three images are screenshots of Netscape 4, showing where to look for the proxy address (IP) and port number.

Select in the following order: 1, 2, 3



If this is selected, you are using a proxy.



This is your proxy address and port number.

